



# Grasse River Project Update

November 2021

**Major construction activities for the Grasse River are complete!** Arconic has completed the in-river construction work to implement the U.S. EPA-selected remedy for a 7.2-mile stretch of the lower Grasse River. Beginning in 2019, dredging and capping of sediment containing PCBs was performed to reduce PCB levels in fish and other organisms for the long-term protection of human health and the environment. Below are details about this important milestone.

## ✓ Dredging is complete!

Material was dredged from the river in the near shore, floodplain, and Snug Harbor areas. Materials were processed at the staging area near Route 131, then disposed in the Secure Landfill. Clean backfill was placed over the dredged areas. Dredging equipment was removed from the river.



## ✓ Capping is complete!

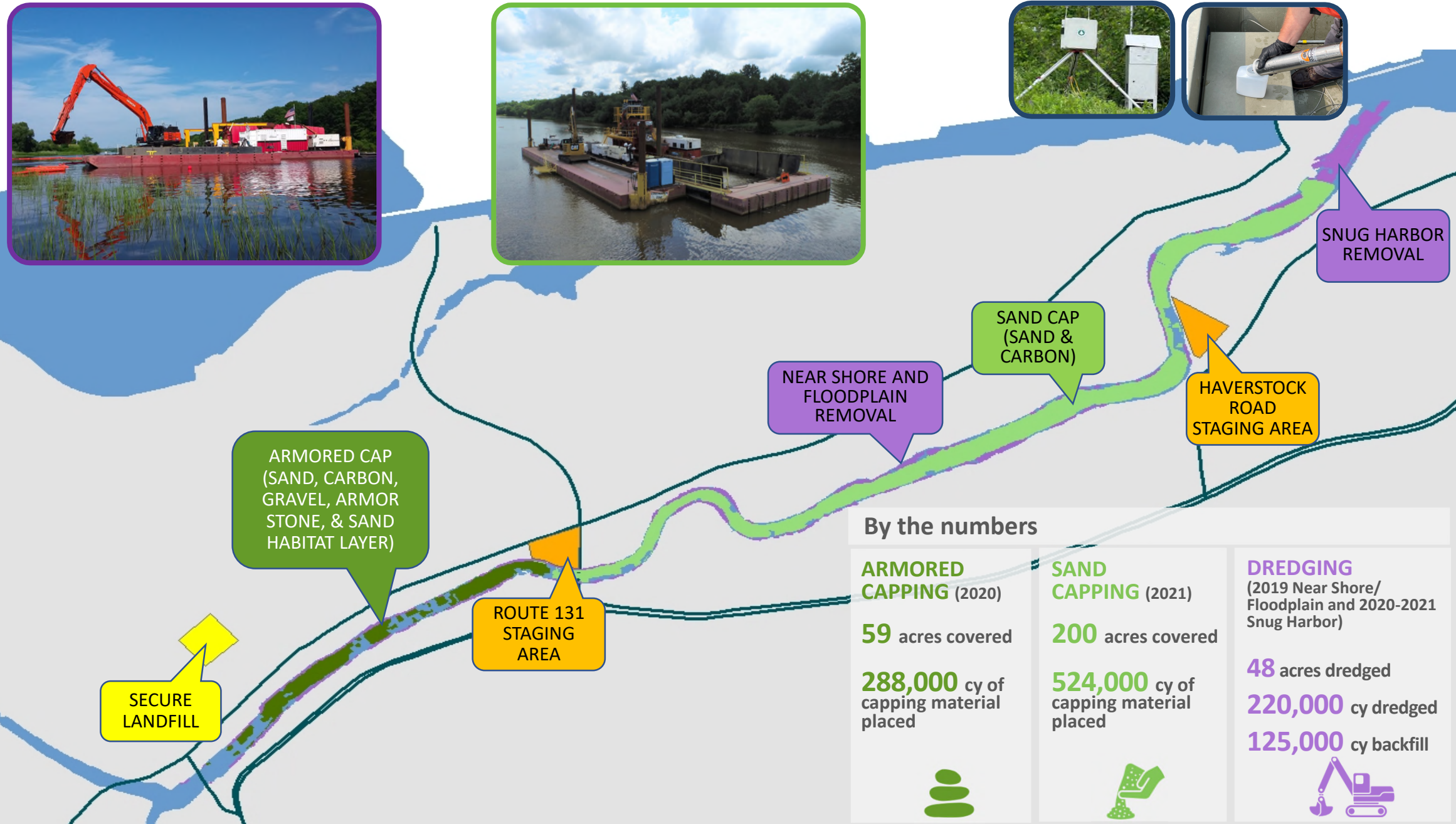
Capping materials were placed on the river bottom from the Alcoa Road Bridge to the mouth of the Grasse River. The capping materials primarily included sand and activated carbon, with some gravel and armor stone. Capping equipment and materials staged near the river were removed and staging areas were restored.



## ✓ Monitoring performed!

Over 10,000 samples were collected from 2019 to 2021 ([click here for monitoring results](#)):

- 6,400+ air samples for PCBs
- 550+ days of dust and VOC air monitoring
- 2,200+ water samples for PCBs
- 2,000+ water samples for TSS
- 1,400+ readings for turbidity



### By the numbers

**ARMORED CAPPING** (2020)

**59** acres covered

**288,000** cy of capping material placed



**SAND CAPPING** (2021)

**200** acres covered

**524,000** cy of capping material placed



**DREDGING** (2019 Near Shore/ Floodplain and 2020-2021 Snug Harbor)

**48** acres dredged

**220,000** cy dredged

**125,000** cy backfill





# Grasse River Project Update

November 2021 (cont'd)

## HABITAT WORK ACCOMPLISHED

195,800 plants placed in the river

629 trees & shrubs planted

4.4 acres seeded on land

22 rock clusters placed in the river

400 fish cribs placed in the river

17 rootwads placed in the river



## Habitat Reconstruction

To support habitat restoration and wildlife, significant habitat enhancement activities were completed, as depicted in the numbers to the left. Plantings were inspected and trimmed after placement to support health and growth. Rock clusters and rootwads were placed to support habitat. Fish cribs were placed in the river at the direction of the New York State Department of Environmental Conservation to improve fish habitat (see middle photo above). [Click here to see maps showing the locations of the fish cribs and other habitat structures.](#)

## Health & Safety

Proactive health and safety measures were essential during the in-river construction work. What's more, the COVID-19 global pandemic added unique health and safety challenges.

As such, Arconic responded by creating a project COVID-19 plan and successfully implementing the necessary precautions to create a safe workplace. [Click here to read about our COVID-19 response measures.](#)



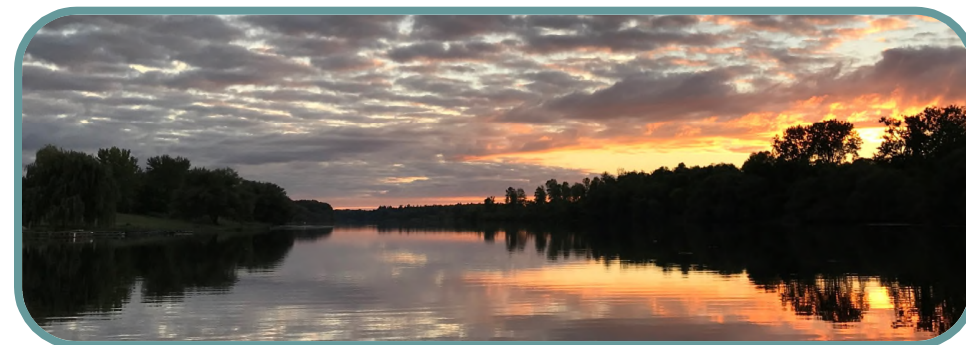
Total duration of construction work: 435,000+ hours  
Total number of safe worker hours: 435,000+ hours

## UPDATE: U.S. EPA Conducts Five-Year Review

U.S. EPA is conducting its first five-year review of the Grasse River Superfund Site. The purpose of five-year reviews is to ensure that cleanup remedies at Superfund sites (such as the Grasse River site) are working as intended and are protective of human health and the environment. The five-year review report is expected to be available in early 2022. [Click here for additional information.](#)

### Glossary

- cy = cubic yards
- PCB = polychlorinated biphenyl
- TSS = total suspended solids
- U.S. EPA = U.S. Environmental Protection Agency
- VOC = volatile organic compound



### FOR MORE INFORMATION ABOUT THIS PROJECT, PLEASE REACH OUT TO:

Young Chang | U.S. EPA Remedial Project Manager | (212) 637-4253 | Chang.Young@epa.gov  
David Tromp | NYSDEC Project Manager | (518) 402-9786 | david.tromp@dec.ny.gov  
Larry McShea | Arconic Project Manager | (724) 337-5458 | Larry.McShea@arconic.com  
Sue Flynn | Arconic Community Relations | (315) 764-4400 | Susan.Flynn@arconic.com

### FOR HEALTH-RELATED QUESTIONS, CONTACT:

Daniel Tucholski | NYSDOH Bureau of Env. Exposure | (518) 402-7860 | Daniel.Tucholski@health.ny.gov

## 2022 Project Activities



Plantings will be maintained. More plantings will be completed in spring 2022.



Long-term monitoring will begin for water, fish, cap, and habitat. Details will be posted on the Grasse River website in 2022.



<http://www.thegrasseriver.com/>

<https://www.epa.gov/superfund/alcoa-aggregate>